



Bobcat

One Tough Animal

MINI TRACK LOADERS

MT100, MT120

🌐 Europe



INTRODUCTION

ONE TOUGH ANIMAL



BOBCAT'S HISTORY

In 1958, Melroe Manufacturing Company introduced a compact front-end loader that evolved quickly into the M400, the world's first true skid-steer loader. The company soon adopted what became the world-famous 'Bobcat' brand — and its success paved the way for the global compact equipment industry we see today.

YEARS OF EXPERIENCE

Today, Bobcat's EMEA headquarters in Dobříš, Czech Republic, serves as a hub for innovation. Here, a manufacturing plant produces around 25 000 machines annually for EMEA customers and global export. The site is also home to the Bobcat Innovation Center, where rigorous testing and product development take place using advanced facilities like climate and anechoic chambers.



BOBCAT TODAY

With over 60 years of manufacturing experience and a commitment to ongoing innovation, Bobcat has delivered millions of machines to the market. Known for their high performance, reliability, and unparalleled comfort, the diverse lineup caters to various applications. Whether it's landscaping, snow removal, construction, demolition, or roadwork, Bobcat machines empower users to accomplish more.



OUR MISSION

We empower operators to accomplish more, while working in the toughest conditions and tightest situations. When our customers have the will, we provide the way.

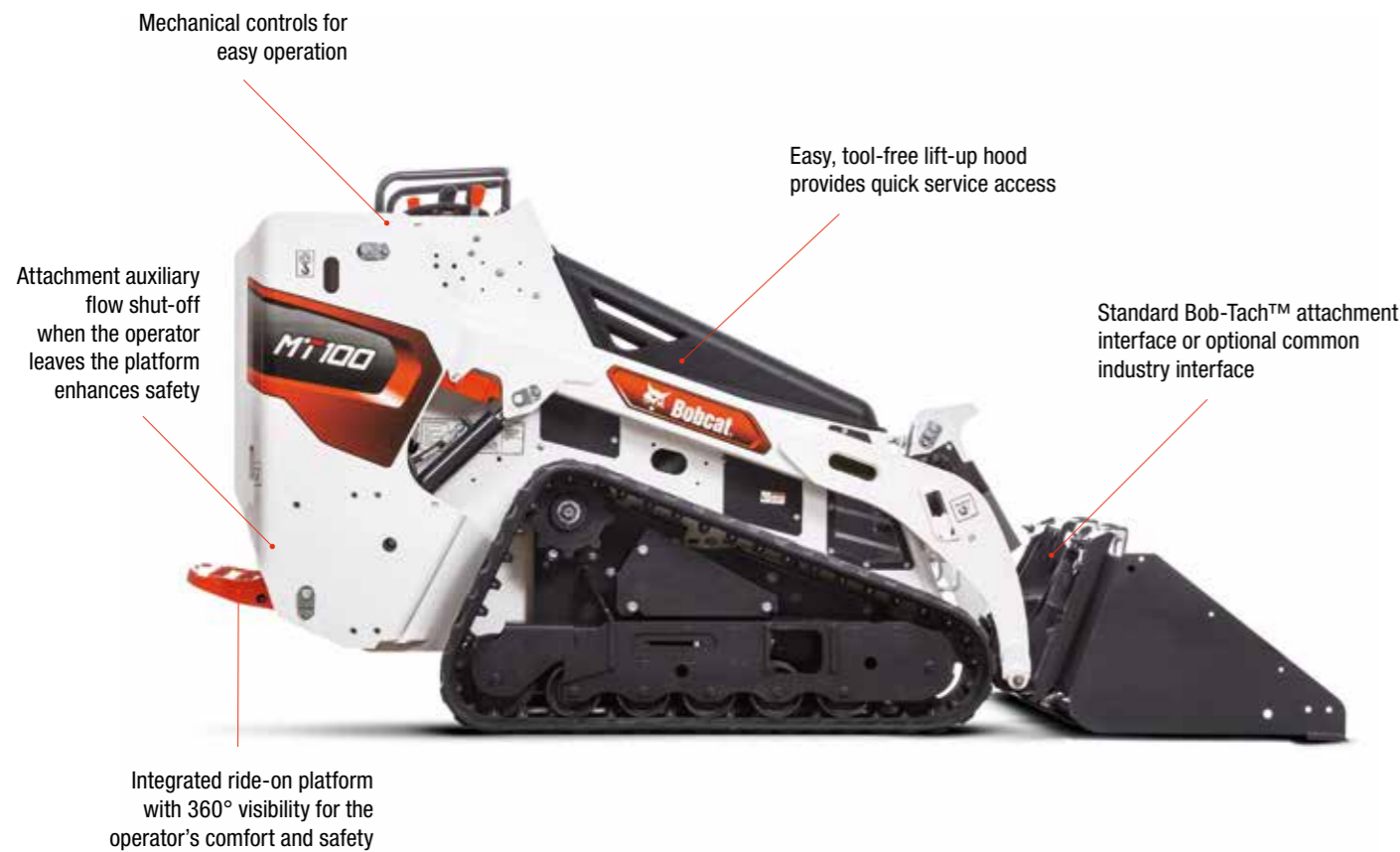
PERFORMANCE MEETS AGILITY

MT100

COMPACT AND AGILE

- Handle everyday tasks confidently without breaking your budget
- Easy operation
- All-round visibility

MT100		
	Unit	
Rated operating capacity	kg	460
Lift height	mm	2 056.8
Max. travel speed	km/h	6.6
Width (with bucket)	mm	914.4



Features shown on the MT100 apply to both models.



YOUR JOB SITE COMPANION

From indoor clean-up to light outdoor tasks, get more done with a machine that matches your effort.



ADAPT TO ANY JOB

With over 25 attachments available — from buckets and forks to sweepers and breakers — the Bob-Tach™ system lets you switch attachments in seconds.

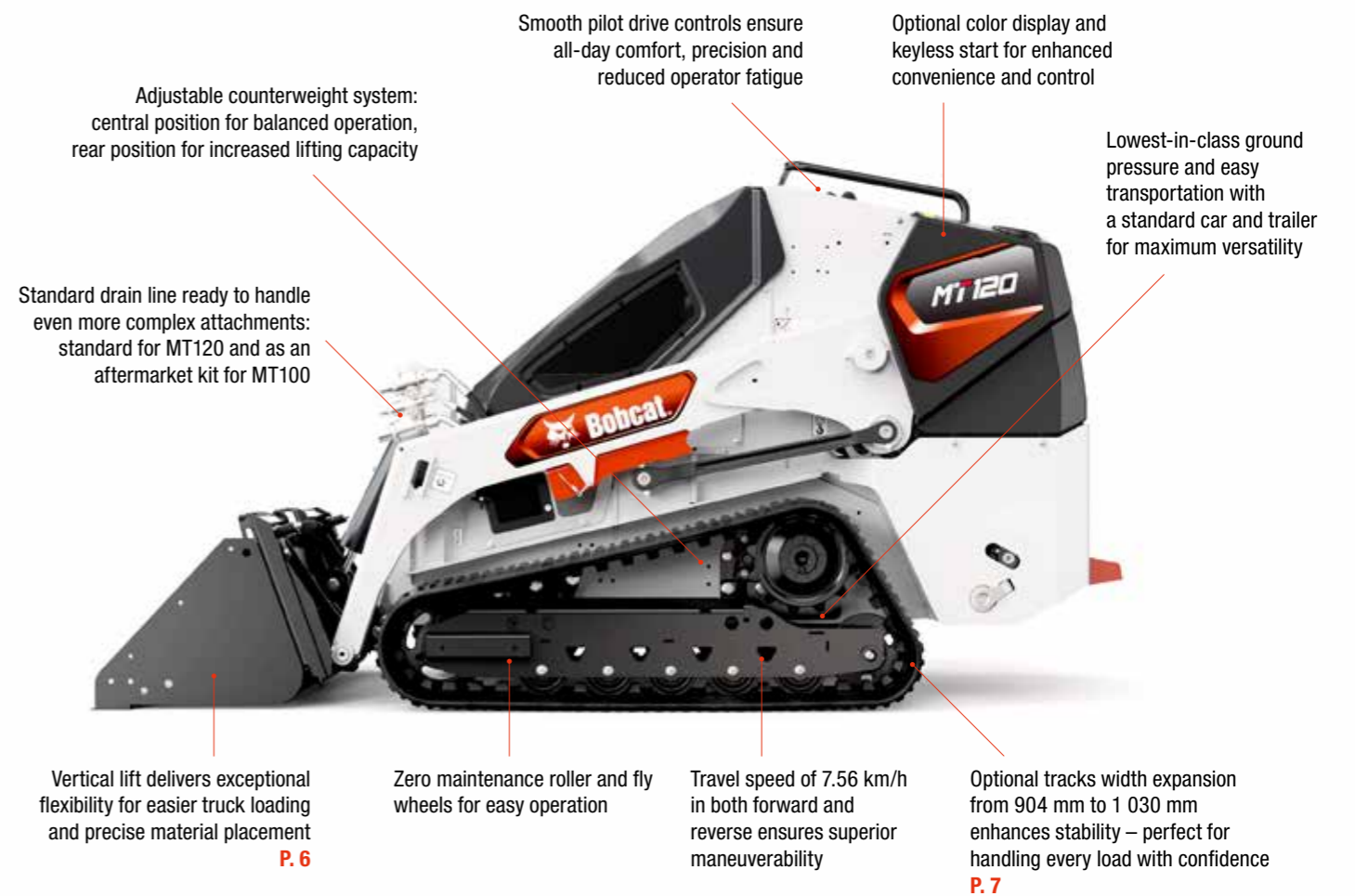
MT120

PERFORMANCE WITHOUT COMPROMISE

The premium model for harder operations and more demanding applications, delivering:

- Lowest-in-class ground pressure
- Up to 20% higher tipping load
- Vertical lift with higher and farther reach
- Proportional auxiliary valve

MT120		
	Unit	
Rated operating capacity	kg	544
Lift height	mm	2 239.2
Max. travel speed	km/h	7.6
Width (with bucket)	mm	914.4



INTUITIVE OPERATION

Operate the machine safely and effectively with intuitive ISO controls, 360° visibility, and excellent stability.



A TIGHT SPOT MASTER

Lightweight structure, compact dimensions, and skid-steer capability — Bobcat mini track loaders are perfect for tight spaces where larger machines can't go.

PERFORMANCE

▶ LET YOUR MACHINE DO THE WORK

With impressive lifting power and a tipping load of up to 1 387 kg for the MT100 and 1 573 kg for the MT120, these dependable machines ease your workload. They take over from wheelbarrows, shovels and other hand tools – handling the heavy lifting, so you can focus on the job.



▶ SMALL BUT POWERFUL

Bobcat's mini track loaders offer impressive power and agility in a compact design. With enhanced lift height, lift capacity, and speed, you'll be ready to tackle any task faster and with more confidence.



▶ RAISE THE BAR

Take your productivity to new heights. The vertical lift of the MT120 gives you extra flexibility for loading trucks or placing materials in hard-to-reach areas.



▶ SMOOTH OPERATOR

Operate comfortably and with ease thanks to cushioning that reduces shock vibration and harsh movement.

▶ KEEP YOUR JOB ON THE RIGHT TRACK

Multi-bar lug tracks, fitted as standard on the MT120, deliver strong traction with low vibration for greater operator comfort. These flexible, cut-resistant and anti-gouge tracks are engineered to suit the working demands of your Bobcat mini track loader. Two track width options let you choose the right balance between performance and ground pressure for your application.

- Width with standard narrow track undercarriage: 904 mm
- Width with optional wide track undercarriage: 1 030 mm
- Possibility to swap wide / narrow body kits (full conversion in approximately 6 hours)



MT120 paired with a stone brier: the perfect match for delivering outstanding efficiency

READY FOR ANY TERRAIN



WIDE / STANDARD TRACK CONVERSION KIT

Switch between standard and wide tracks for the MT120 to match any job or surface. Each kit includes all components needed for a full conversion in around 6 hours. Tracks sold separately.

**ASK YOUR DEALER
ABOUT THE BEST KIT
FOR YOUR NEEDS.**

EASE OF USE

▶ COMPACT TOOL CARRIER

With intuitive controls, effortless maintenance access, and a practical ride-on design, every detail is there to make your shift easier. Whether you're a beginner or a seasoned pro, the machine works with you — keeping operation smooth all day long.



▶ RIDE-ON MACHINE

Hop on and off with ease, and enjoy a full, 360° view of the job site from the stand-on platform at the back of the machine.

▶ INTUITIVE OPERATION

Operate with confidence thanks to hydraulic or smooth pilot drive controls that reduce fatigue and keep you comfortable through long shifts. The controls are intuitive and easy to use for beginners and pros alike.

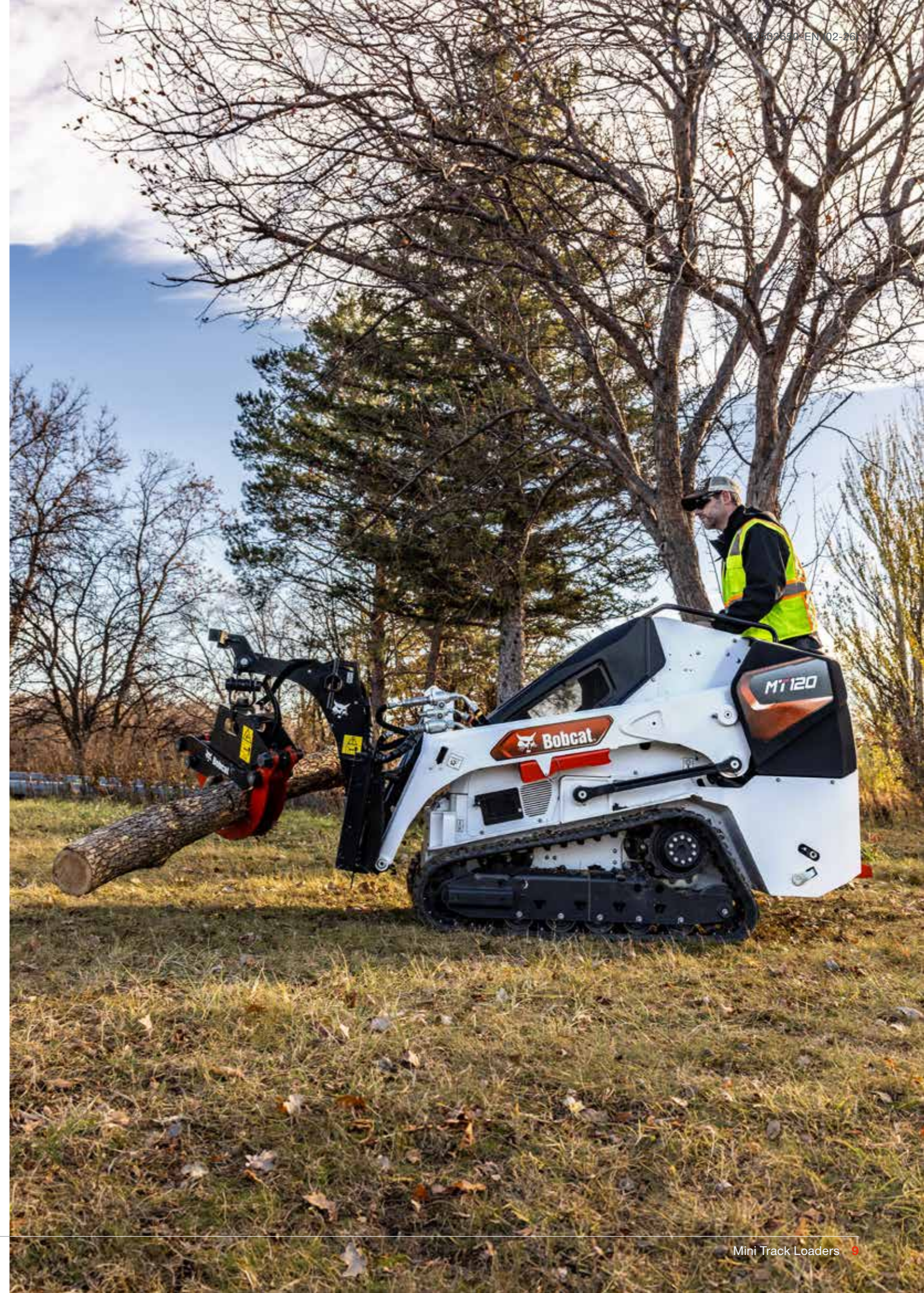
LIGHT YOUR WAY. GET MORE DONE.



FRONT / REAR LED LIGHT KIT

Work with confidence, day or night. The Front and Rear LED Light Kits deliver bright, reliable visibility in all conditions. Each kit includes 2 LED lights with mounting brackets for quick installation — done in just 30 minutes.

ASK YOUR DEALER
ABOUT THE BEST KIT
FOR YOUR NEEDS.



ATTACHMENTS

▶ COMPACT TOOL CARRIER

Whatever the job, you're equipped to handle it. Customize your mini track loader with 25+ attachments to tackle any task in seconds. Thanks to powerful hydraulics and the Bob-Tach™ interface, switching attachments is quick and simple, letting you tackle a variety of tasks with ease.



▶ STONE BURIER

Prepare perfect ground in one pass. The stone burier buries rocks and debris and leaves a smooth, ready-to-seed surface — ideal for landscaping.



▶ GRAPPLE BUCKET

This sturdy grapple is perfect for moving those tricky agricultural materials. With options like bolt-on forged teeth, oxycut welded teeth, and bolted side flanges, it's built to give you the flexibility you need for any job.



▶ BRUSHCAT ROTARY CUTTER

Tackle tough brush clearing and landscaping tasks effortlessly with the Brushcat™ rotary cutter. This powerful attachment slices through thick grass and brush, effortlessly mulching small branches and saplings up to 7.6 cm in diameter.



▶ LANDPLANE

This versatile attachment grades and levels in both directions, making sod removal effortless. It features a bi-directional scarifier and a removable screen to break up soil clods, aerate the ground, and separate debris. Need to move materials? It also doubles as a bucket for easy on-site transport.



▶ TRENCHER

Explore the versatility of our trencher attachment, ideal for digging trenches for utility and irrigation systems. Engineered for strength and power, it tackles tough soils with ease and offers a convenient side-shift feature for trenching near buildings and obstacles.



▶ SNOWBLOWER

Designed for controlled snow placement, the Bobcat snowblower rotates in both directions, allowing you to direct snow exactly where needed — even in tight or hard-to-reach areas. Keep work areas accessible while minimizing clean-up around finished surfaces.



▶ SWEEPER

Our sweeper collects dirt and debris in both forward and reverse, making it perfect for keeping parking lots, sidewalks, docks, warehouses, and more spick and span. With new features like a patented height adjustment right on top of the sweeper and a double-axis floating gutter brush, it's easier than ever to get the job done right.



▶ SOIL CONDITIONER

This versatile and cost-effective landscaping attachment helps you smooth ruts, level mounds, and move material. Follow the contours of the ground perfectly with the fixed or floating modes to create the ideal bed for seeding or sodding.



▶ TILLER

Break ground, prepare soil for planting, and amend soil with fertilizer, manure, or mulch. There are no job site conditions that can stop these tillers.

TOTAL CONTROL AT YOUR FINGERTIPS



ATTACHMENT CONTROL DEVICE (ACD) KIT, 14-PIN

Take full control of your attachments with ease. The 14-pin connector — required for the angle broom, snowblower, and stump grinder — lets you operate attachments with up to 3 functions for precise, reliable performance. Quick to install — up and running in about an hour.

**ASK YOUR DEALER
ABOUT THE BEST KIT
FOR YOUR NEEDS.**

CHOOSE YOUR TRACKS



▶ TRACK OPTIONS TAILORED TO YOUR WORK

You can choose between multi-bar lug tracks and C-pattern tracks to match your working conditions. Multi-bar lug tracks, fitted as standard, provide strong, consistent traction with low vibration for a stable and comfortable ride across demanding terrain. C-pattern tracks are optimized for hard or finished surfaces, delivering an even smoother ride with reduced surface disturbance. Both options allow you to tailor performance, ride comfort and ground impact to suit your application.

TRACKS				
MODELS	Unit	C-PATTERN	MULTI-BAR LUG	MULTI-BAR LUG NON-MARKING TREAD PATTERN
MT100	mm	180 and 230 (standard for MT100)	180 and 250	180 and 230
MT120	mm	230 and 280	230 and 280 (standard for MT120)	230 and 280

▶ NARROW TRACK: 904 MM WITH 230 MM TRACKS

With the narrow track option, the MT120 can easily pass through doorways and fence gates. Ground pressure as low as 0.30 bar (4.3 psi) helps protect turf and finished surfaces during everyday work.

▶ WIDE TRACK: 1 030 MM WITH 280 MM TRACKS, MINIMIZED GROUND PRESSURE, INCREASED STABILITY

For added stability and a smoother ride, the optional wide track further reduces ground pressure to as low as 0.27 bar (3.9 psi) on the MT120 — providing a lighter footprint when working on sensitive ground.



A MACHINE THAT WORKS WITH YOU. A BRAND THAT STANDS BEHIND YOU.

Buying a Bobcat isn't just a purchase — it's peace of mind. We're with you from day one until the job's finished.



BOBCAT WARRANTY

COVERAGE THAT HAS YOUR BACK

Every new Bobcat comes with built-in confidence — and the option to go even further.

- ✓ Up to 24 months / 2 000 hours of standard coverage (varies by model)
- ✓ Extend your warranty to up to 5 years / 6 000 hours for even greater peace of mind



ATTACHMENTS

ONE MACHINE, MANY JOBS

Your Bobcat is more than a machine — it's your all-in-one solution. From loading to drilling to clean-up, swap tasks in seconds.

- ✓ Pre-selected kits for easier set-up
- ✓ Quick changes with Bob-Tach® or common industry interface (CII)

TRAINING VIDEOS:
QUICK TIPS,
REAL RESULTS



SERVICE

SERVICE THAT KEEPS YOU MOVING

Bobcat-authorized service means your machine gets expert care — fast. Regular checks, genuine parts, minimal downtime. And support that's always close by.

MAINTENANCE VIDEOS:
MT100, MT120



GENUINE PARTS

GUARANTEED PERFORMANCE

Perfect fit, lasting performance, longer machine life. With genuine Bobcat parts, every start is reliable, and every action precise.

- ✓ Wide partner network
- ✓ 96% of parts delivered within 48 hours



BOBCAT CERTIFIED

BACKED TO HOLD VALUE

A well-maintained Bobcat keeps its edge — and its value. With Bobcat Certified, your machine stays recognized, trusted, and ready for the next owner.

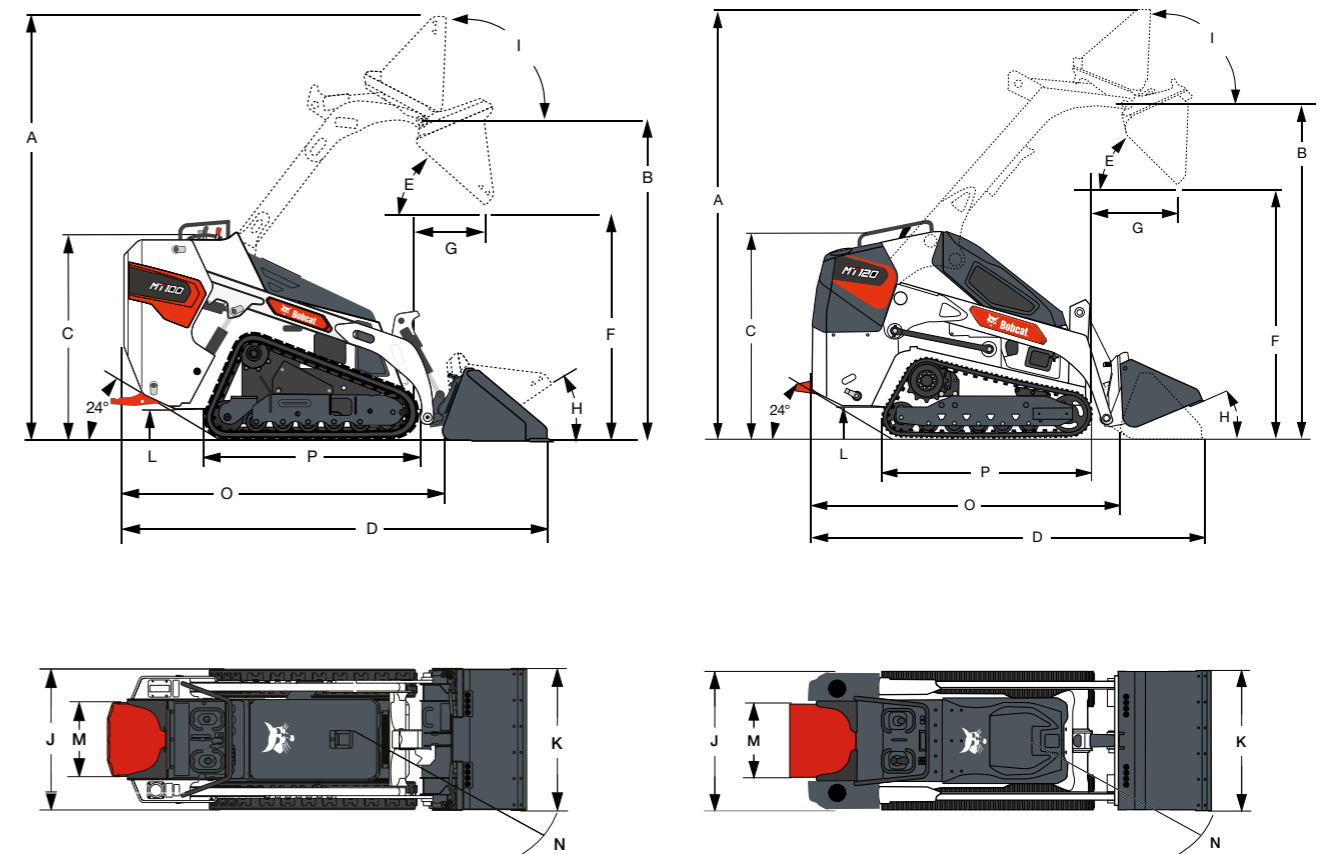
BOBCAT. RELIABILITY THAT LASTS LONGER.

SPECIFICATIONS

DIMENSIONS

SPECIFICATIONS			
	Unit	MT100	MT120
PERFORMANCE (FRONT COUNTERWEIGHT)			
Rated operating capacity (ISO 14397-1)	kg (lb)	460 (1 000)	544 (1 200)
Tipping load (ISO 14397-2)	kg	1 314	1 573
Boom breakout force	kg	1 510	1 345.8
Ground pressure (Std / Opt track)	psi	5.3	4.27 / 3.9
Pilot drive control		–	✓
Vertical lift		–	✓
Proportional aux in work group		–	✓
Track tensioning grease cylinder		–	✓
ENGINE			
Make, model		Kubota, D902-E4B-BC-1	Daedong 3L123-BC4A
Fuel			diesel
Cooling			liquid
Power at 3 600 RPM (ISO 9249)	kW	17.5	18.3
Torque at 2 600 RPM (SAE J9249)	Nm	54.2	–
Torque at 1 800 RPM (ISO 9249 / SAE J1349)	Nm	–	70
Number of cylinders			3
Displacement	l	0.9	1.23
WEIGHT			
Operating weight	kg	1 538	1 687
Shipping weight	kg	1 381	1 535
HYDRAULIC SYSTEM			
Implement pump		Engine driven gear type	
System relief	MPa	20	20.3 – 21.7
Implement pump capacity	l/min	45.4	44.7
Main filter		Full flow replaceable	Replaceable spin on canister
Control valve		Manually operated 3 spool open center	Manually operated series type (lift & tilt functions) with float detent on lift. Electric over hydraulic operated parallel type
Hydraulic fluid		Premium grade, anti-wear, multi viscosity ISO VG46, petroleum based	
Lift arm raise / lower time	s	3.2 / 2.1	3.8 / 2.7
Bucket rollback / dump time	s	1.5 / 1.7	1.4 / 1.9
DRIVE SYSTEM			
Transmission and steering		2 independently controlled hydrostatic drive pumps, motors with high-efficiency track drive sprockets	Infinitely variable tandem hydrostatic piston pumps, driving 2 fully reversing hydrostatic motors
Maximum travel speed forward	km/h	6.6	7.56
Maximum travel speed reverse	km/h	4.7	7.56
ELECTRICAL			
Alternator		40 A ventilated	12 V, 90 A open frame w/ internal regulator
Battery		12 V; 540 A cold cranking capacity at -18 °C	
Starter		12 V gear type 2.0 kW	12 V; gear reduction, 2.0 kW
Ignition		Switch activates starter and instrumentation	Automatically activated glow plugs (as needed)
FLUID CAPACITIES			
Cooling system	l	4.3	
Fuel tank	l	26.5	30.6
Engine oil	l	3.6	3.8
Hydraulic and hydrostatic system	l	20.5	18.5
Hydraulic and hydrostatic reservoir	l	9.5	5.29

DIMENSIONS				
	Unit	MT100	MT120	
A Overall operating height—fully raised	mm	2 676.7	2 874.2	
B Height to hinge pin—fully raised	mm	2 056.8	2 239.2	
C Overall height	mm	1 387.2	1 463.8	
D Overall length	mm	2 698.4	2 726.3	
E Dump angle	°	48.7	45	
F Dump height	mm	1 488.2	1 681.4	
G Reach at 45° dump angle	mm	511.3	565	
H Maximum rollback at ground level	°	22.7	23	
I Maximum rollback—fully raised	°	83.3	88	
J Overall width	mm	903.8	904	
K Bucket width	mm	914.4	914.4	
L Ground clearance	mm	205	200.2	
M Tread / track gauge	mm	723.8	674	
N Machine clearance radius	mm	1 455	1 547.1	
O Length without attachment	mm	1 992.6	1 989.7	
P Track span	mm	1 353	1 415.1	



Certain specification(s) are based on engineering calculations and are not actual measurements. Specification(s) are provided for comparison purposes only and are subject to change without notice. Specification(s) for your individual Bobcat equipment will vary based on normal variations in design, manufacturing, operating conditions, and other factors. Pictures of Bobcat units may show other than standard equipment.

FINANCING OPTIONS

24, 36, OR 48-MONTH FINANCING*

Take advantage of 24, 36, or 48-month financing programs starting from **0% interest** and improve your cash flow.

Ask your dealer for the financing offers available.



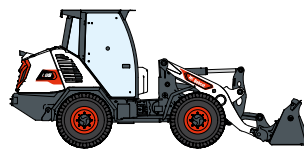
340 MACHINES / **150** ATTACHMENT FAMILIES / **1** TOUGH ANIMAL



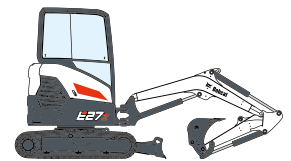
**SKID-STEER
LOADERS**



**COMPACT TRACK
LOADERS**



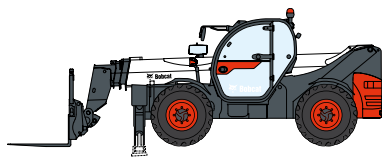
**COMPACT WHEEL
LOADERS**



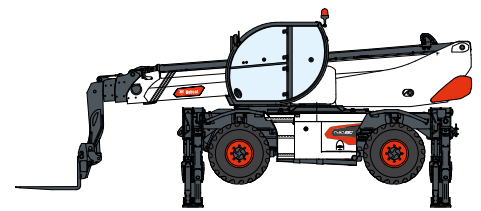
**COMPACT
EXCAVATORS**



FORKLIFTS



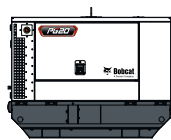
TELEHANDLERS



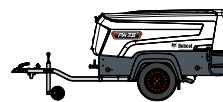
ROTARY TELEHANDLERS



**WAREHOUSE
EQUIPMENT**



GENERATORS



**AIR
COMPRESSORS**



**LIGHT COMPACTION
EQUIPMENT**



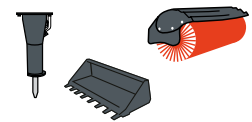
**COMPACT
TRACTORS**



**MINI TRACK
LOADERS**



MOWERS



ATTACHMENTS

DOOSAN

Bobcat is a Doosan Company. Doosan is a global leader in construction equipment, power & water solutions, engines, and engineering proudly serving customers and communities for more than a century. | Bobcat and the Bobcat logo are registered trademarks of Bobcat Company in the United States and various other countries. ©2026 Bobcat Company. All Rights Reserved.

*Financing options may vary by country and dealer. Always ask your dealer about currently available financing options. Terms and conditions may apply.

Doosan Bobcat EMEA, U Kodelky 1810, 263 12 Dobříš, Czech Republic



Bobcat