



Bobcat

One Tough Animal

COMPACT EXCAVATORS

E16, E17z, E19, E20z

1-2t, R2-Series

🌐 EMEA



INTRODUCTION

ONE TOUGH ANIMAL



BOBCAT'S HISTORY

In 1958, the Melroe Manufacturing Company introduced a compact front-end loader that quickly evolved into the M400, the world's first true skid-steer loader. The company soon adopted what became the world famous "Bobcat" brand — and its success paved the way for the global compact equipment industry we see today.

INNOVATION CENTRE IN DOBŘÍŠ

Today, Bobcat's EMEA headquarters in Dobříš, Czech Republic, serves as a hub for innovation. Here, a manufacturing plant produces around 25 000 machines annually for EMEA customers and global export. The site is also home to the Bobcat Innovation Centre, where rigorous testing and product development take place using advanced facilities like climate and anechoic chambers.



BOBCAT TODAY

With over 60 years of manufacturing experience and a commitment to ongoing innovation, Bobcat has delivered millions of machines to the market. Known for their high performance, reliability, and unparalleled comfort, the diverse lineup caters to various applications. Whether it's landscaping, snow removal, construction, demolition, or roadwork, Bobcat machines empower users to accomplish more.



Compact Excavator E16, E17z, E19, E20z 3

OUR MISSION

We empower operators to accomplish more, while working in the toughest conditions and tightest situations. When our customers have the will, we provide the way.

SMOOTH POWER & PREMIUM COMFORT

► BIG PERFORMANCE, COMPACT DESIGN

Enjoy big performance, all-day comfort, and easy transport with our compact yet powerful excavators. Our machines offer versatility, precise positioning, and convenience for a more productive workday. Plus, with enhanced durability, you can optimize performance while minimizing maintenance needs.



LED light system
P. 15

TOPS / ROPS (FOPS Level 1 — for canopy only)
certified cab and canopy

Double protection
for exterior hoses

Full control of your surroundings — thanks
to the great visibility through larger glass
area and excellent ergonomics
P. 8

Up to 4 independent AUX lines to control
most advanced attachments + stop valves
for permanent clamp installation

3D handle for easy entry and exit

Object handling
package

Protected
underboom light

Metal covers that open and close
effortlessly for easy maintenance
P. 10

Mechanically controlled Stage V engine
with auto idling functionality

Selection of
coupler systems

Easy access to battery
disconnection

Hydraulic oil level visible
from outside

Heavy counterweight with
same tail overhang

Upgraded hydraulic system

Upper-structure tie-downs
for easy transportation

2-speed travel motor with autoshift
P. 13

Reinforced blade with floating
function and new extensions



► EASY AND PRECISE

Get top performance with our upgraded hydraulic system, featuring a load-sense pump, closed-center hydraulics, and premium joysticks for smooth, easy operation.



► ALL-DAY COMFORT

Enjoy all-day comfort and efficiency with our auto-idle engine, boosting fuel economy while reducing noise and vibration. Plus, stream your favorite tunes with the convenient BT DAB Radio.



► HASSLE-FREE TRANSPORT

Our machines are built for easy transport, featuring optimized lift points, integrated tie-down points, and an automatic slew brake for hassle-free relocation to your next job.



► NEXT LEVEL DURABILITY

We've added reinforced easy-opening covers, under-boom lighting, wider track clearance, improved bucket link mechanisms, better cylinder fittings, and long-lasting tracks — everything to help you perform at your best.

PERFORMANCE



EFFICIENT POWER

Improved Bobcat hydraulic architecture for all new models paired with a new engine delivers an unbeatable performance. Fast cycle times, combined with smooth control of class-leading breakout forces, provide maximum productivity. Boom and dipper stick cylinder cushioning – unique in their class – enhance overall smoothness.

LIFT MORE, LIFT HIGHER

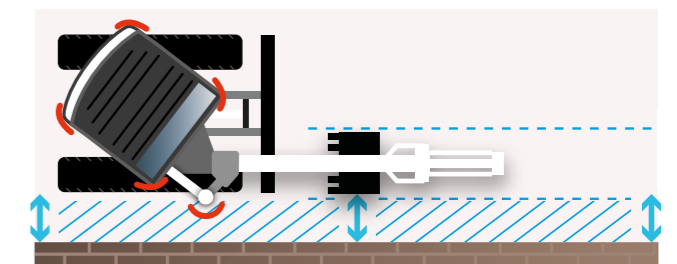
The superior dumping height makes loading trucks easy, while the reach at ground level means you don't need to reposition as often when digging. With enhanced stability and lifting capacity, combined with low-effort joysticks make the operation very smooth and powerful at the same time.



POWER WHERE YOU NEED IT

RIGHT TOOL FOR THE JOB

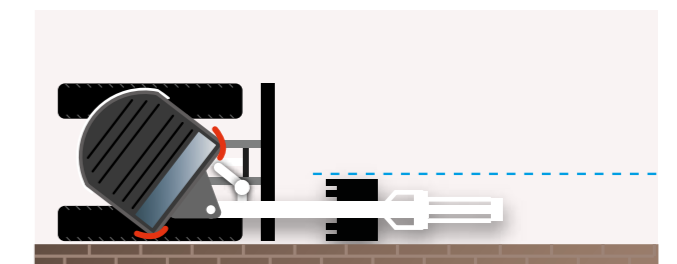
In backyards, urban areas and other tight-fitting jobsites, a big machine means big challenges. Bobcat machines allow operators to work in constrained environments, in extreme proximity to walls and other challenging situations.



Conventional tail swing

ZERO HOUSE SWING

The Bobcat Zero House Swing (ZHS) concept enhances Zero Tail Swing (ZTS) functionality by further protecting the front upper-structure corners turning within the swing circle. The design also eliminates the protrusion of the boom swing cylinder during parallel digging.



Zero House Swing (ZHS)

STEP INSIDE



PRECISION MEETS PRACTICALITY

Take a seat and immediately get to grips with the intuitive controls – ideal for both experienced and novice operators. Joysticks with all key functions in the right place, smooth travel pedals, and personalized controls for pinpoint accuracy.

DELUXE DASHBOARD

Bobcat 1–2t excavators feature an intuitive control panel and keyless ignition for increased convenience and security.



SEE MORE, WORK BETTER

The tall, wide windows inside Bobcat compact excavators provide as much glass surface area as possible. Add narrower side pillars, and you have visibility that's never been better.

EASY ENTRY



Our excavators prioritize operator comfort, making it easy to enter and exit the cab with thoughtfully designed handles and step height.

PERFECT SEAT

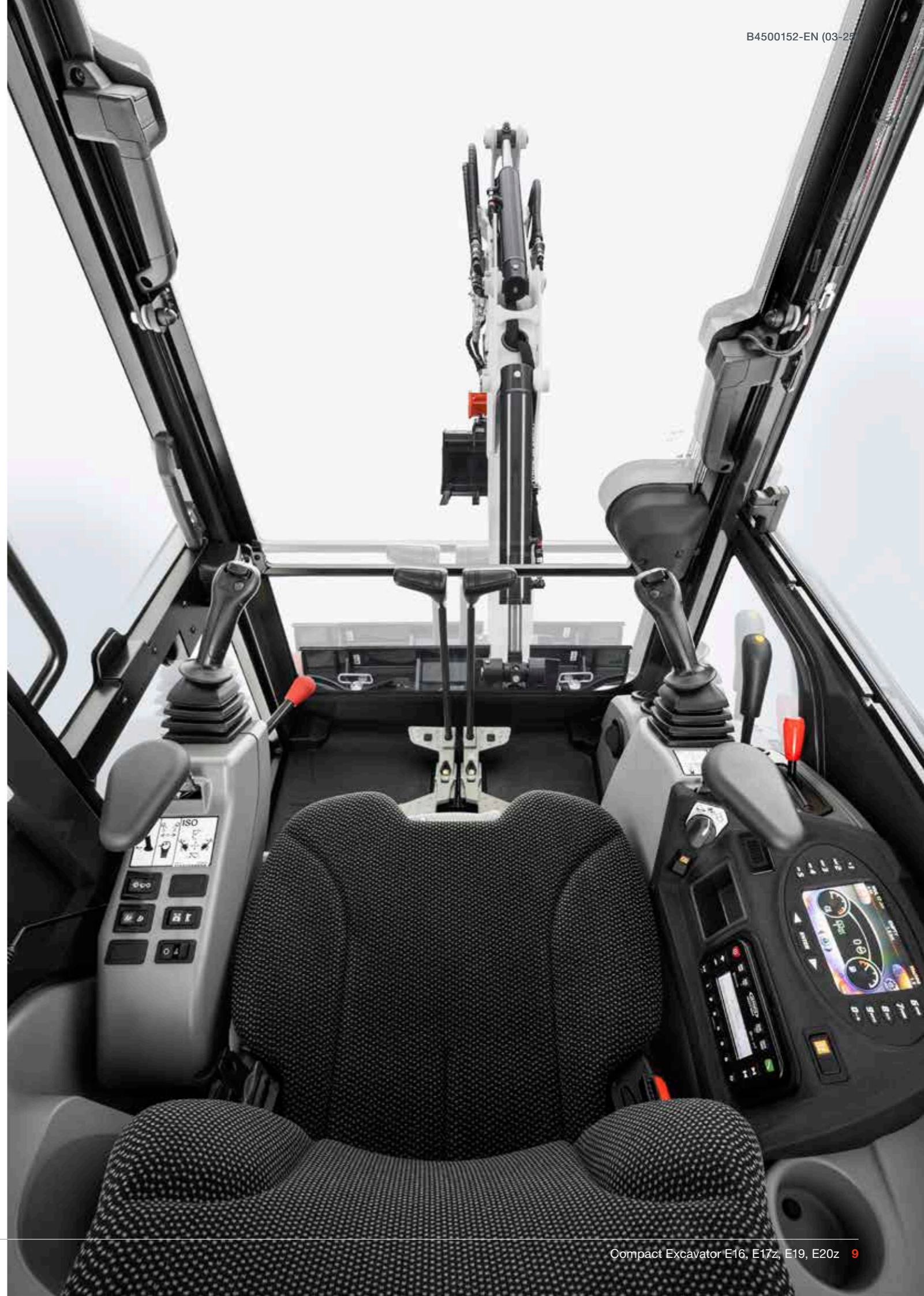


Stay comfortable all day with ergonomic, easily adjustable seats with suspension options.

IN ALL WEATHER CONDITIONS



Stay comfortable and focused on the job all year round with direct cab temperature control.



BUILT TOUGH

► TOUGH MATERIALS

The use of highly durable materials makes Bobcat excavators hard-wearing and robust.

- Rear tailgates protected by cast counterweights
- Oversized cylinders for long life
- New paint and surface treatment process
- Reinforced expandable undercarriage enhances rigidity
- Cylinder covers for heavy applications

► TESTED DESIGN

The design features are tested under extreme conditions and ensure extra durability and peace of mind while working.

- Metal covers can be opened or bolted on
- 2-piece blade cylinder hoses
- Wrenchless hydraulic hose technology helps prevent leakage
- Proven boom and dipper stick design
- Top-mounted boom cylinder



► MACHINE IQ

Bobcat Machine IQ Wireless Communications enhances the support for your Bobcat machine.

- Durable built-in monitoring electronics
- Data is available to our machine monitoring specialist
- Maintenance is optimized for your business
- Data-driven services maximize uptime

► STANDARD WARRANTY

Bobcat Company develops every machine to the highest standards of quality and durability. That's why our standard warranty provides 24 months or 2 000 operating hours (whichever occurs first) of coverage.



THERE'S NO TIME FOR DOWNTIME. STAND UP TO THE HARSHTEST CONDITIONS, DAY AFTER DAY.



► PROTECTION PLUS EXTENDED WARRANTY

Enjoy total peace of mind with a Protection Plus extended warranty. Providing the same level of protection as the standard warranty, Protection Plus also reflects different customer needs and expectations by offering a choice of durations and annual operating hours. According to your needs, you can benefit from the coverage for up to 5 years or 6 000 engine hours. And Protection Plus is transferrable — so it will likely increase your machine's resale value.



► BOBCARE PLANNED MAINTENANCESM

A long-running machine starts with proper planned maintenance. And it helps protect against repair costs and unplanned failures when you're counting on your machine to work.

- Avoid risk by preventing major repairs and complete failures.
- Accomplish more by reducing downtime and increasing your productivity and profitability.

CHOOSE YOUR ANIMAL



E16

► LIGHTER AND SMOOTHER

This entry level 1.5 ton excavator — designed for easy transportability.

- Transport mass < 1.5 t (canopy)
< 1.6 t (cab)



E19

► PERFORMANCE MEETS COMFORT

For experienced operators focusing on performance and operator comfort.

- Class leading lift capacity and stability
- Low effort joysticks for precise movement control
- Autoshift travel motors guarantee better traction and manoeuvrability



E17z

► WORK ANYWHERE

For operators looking for compactness and easy transportability.

- Transport mass just under 1.6 tons



E20z

► ULTIMATE PERFORMANCE IN A COMPACT PACKAGE

For operators looking for compactness without sacrificing operator comfort and performance.

- Zero House Swing functionality (even with a cab)
- Best-in-class stability for a conventional machine
- Low effort joysticks for very precise control of movements
- Autoshift travel motors guarantee better traction and manoeuvrability

STANDARD EQUIPMENT & OPTIONS

| STANDARD EQUIPMENT & OPTIONS | | | | |
|--|-----|------|-----|------|
| | E16 | E17z | E19 | E20z |
| PERFORMANCE | | | | |
| 980 mm dozer blade with two 190 mm blade extensions | ✓ | ✓ | ✓ | ✓ |
| Adjustable double acting auxiliary hydraulics with quick couplers | ✓ | ✓ | ✓ | ✓ |
| Auto idle | • | • | • | • |
| AUX1 direct return to tank | • | • | • | • |
| AUX1 on arm | • | • | – | – |
| AUX2 hydraulics | – | – | • | • |
| AUX1 / AUX2 on arm | – | – | • | • |
| Blade float feature | – | – | ✓ | ✓ |
| Bucket valves (AUX3) kit | • | • | • | • |
| Demolition package (boom, arm, bucket cylinder covers & HD travel hoses guard) | • | • | • | • |
| Dual direction detent | ✓ | ✓ | ✓ | ✓ |
| Hydraulic coupler lines (AUX5) | • | • | • | • |
| Hydraulic joystick controls | ✓ | ✓ | ✓ | ✓ |
| Long dipperstick with clamp eyes | – | – | • | • |
| Long dozer blade | • | • | ✓ | ✓ |
| Object handling package (valves, OWD, lifteye) | – | – | • | • |
| Proportional fingertip auxiliary and boom swing offset hydraulic control | ✓ | ✓ | ✓ | ✓ |
| Special application kit | • | • | • | • |
| CAB & CANOPY | | | | |
| AM/FM/DAB radio + phone call ready | • | – | – | • |
| Beacon | • | • | • | • |
| Cupholders | ✓ | ✓ | ✓ | ✓ |
| Deluxe textile suspension seat | • | – | – | – |
| Exposed counterweight with 4 mm steel tailgate | – | – | ✓ | – |
| Foldable and ergonomic travel pedals | ✓ | ✓ | ✓ | ✓ |
| Heavy counterweight | – | – | • | – |
| Horn | ✓ | ✓ | ✓ | ✓ |
| Keyless ignition | • | • | • | • |
| L/R mirrors | • | • | • | • |
| Retractable seat belt | ✓ | ✓ | ✓ | ✓ |
| Suspension seat | – | – | • | • |
| Storage compartment | ✓ | ✓ | ✓ | – |
| TOPS / ROPS cab with heater | • | – | • | • |
| TOPS / ROPS / FOPS canopy* | ✓ | ✓ | ✓ | ✓ |

✓ = standard • = option – = not available

*Tip Over Protective Structure (TOPS) – Meets requirements of ISO 12117.
Roll Over Protective Structure (ROPS) – Meets requirements of ISO 3471.
Falling Object Protective Structure (FOPS) – Meets requirements of ISO 3449.

| STANDARD EQUIPMENT & OPTIONS | | | | |
|--|-----|------|-----|------|
| | E16 | E17z | E19 | E20z |
| LIGHTS & BEACON | | | | |
| Additional LED work lights | • | • | • | • |
| LED work lights | ✓ | ✓ | ✓ | ✓ |
| Work light (boom) | – | – | – | ✓ |
| MISCELLANEOUS | | | | |
| Battery disconnect switch | ✓ | ✓ | ✓ | ✓ |
| Clamp ready | ✓ | ✓ | ✓ | ✓ |
| Control console locks | ✓ | ✓ | ✓ | ✓ |
| Engine monitor with auto shutdown | ✓ | ✓ | ✓ | ✓ |
| Full fuel warning alarm | ✓ | ✓ | ✓ | ✓ |
| Grease gun holder | ✓ | – | • | – |
| Hydraulic and travel control lockout | ✓ | ✓ | ✓ | ✓ |
| Hydraulically retractable undercarriage from 1360 mm to 980 mm | ✓ | ✓ | ✓ | ✓ |
| Machine IQ (telematic) | ✓ | ✓ | ✓ | ✓ |
| Upper structure 4 point tie down | ✓ | ✓ | ✓ | ✓ |
| Warranty: 24 months, 2000 hours (whichever occurs first) | ✓ | ✓ | ✓ | ✓ |
| Water separator | ✓ | ✓ | ✓ | ✓ |
| TRACKS & TRAVEL | | | | |
| 230 mm rubber track | ✓ | ✓ | ✓ | ✓ |
| 2-speed travel | ✓ | ✓ | – | – |
| 2-speed travel with Auto shift | – | – | ✓ | ✓ |
| Travel motion alarm | • | • | • | • |



TOPS / ROPS cab with heater

PERSONALISE YOUR MACHINE

Sometimes, we all want to add a specific functionality or a personal touch to the machine. Choose from a list of comprehensive options and customize your mini excavator to your heart's content!



AM/FM/DAB radio



Beacon



Foldable and ergonomic travel pedals



Hydraulic joystick control



Expandable dozer blade



Work light (boom)



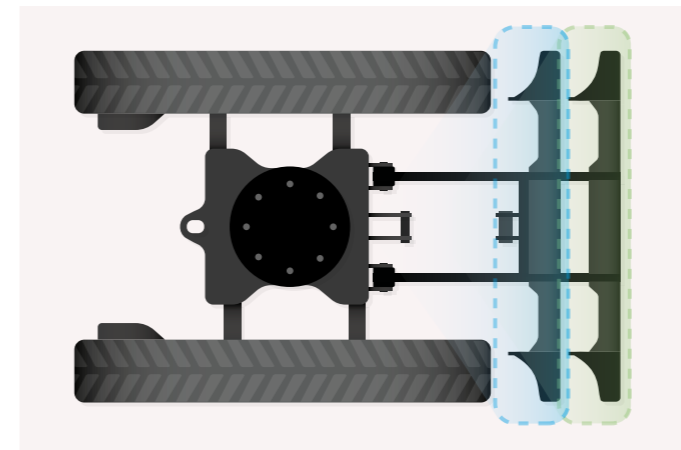
LED lights



AUX lines



Retractable undercarriage



DOZER BLADE OPTIONS

- Standard length for customers who prefer a compact size for working in reduced spaces.
- Extended length for customers who prefer dustpanability and increased front stability. All blades provide excellent departure angles and higher profile for better dozing performance.

MULTI-TOOL CARRIER

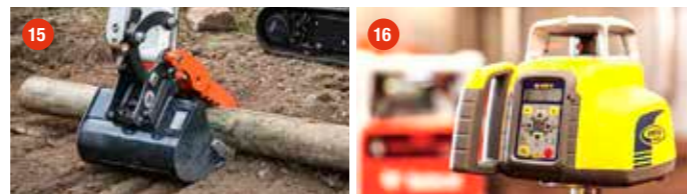
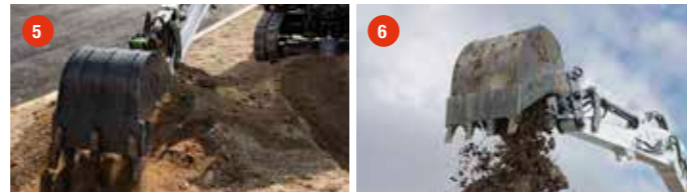
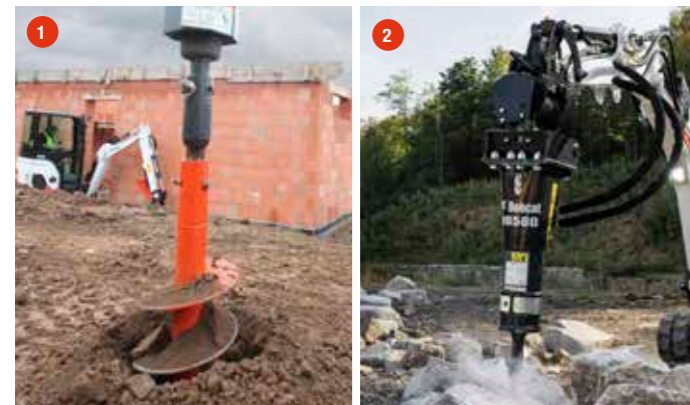
BOBCAT ATTACHMENTS

Get more versatility and efficiency with Bobcat attachments and implements. With the largest choice of attachments in the industry you can easily match performance to your Bobcat machine. Work harder with stronger components and rest easy with the 12-month warranty on every genuine Bobcat attachment.

TOP SELECTION OF ATTACHMENTS

| | E16 | E17z | E19 | E20z |
|----------------------------------|-----|------|-----|------|
| 1 Auger | • | • | • | • |
| 2 Breaker | • | • | • | • |
| 3 Bucket, digging, heavy duty | • | • | • | • |
| 4 Bucket, digging, standard duty | • | • | • | • |
| 5 Bucket, digging, UK type | • | • | • | • |
| 6 Bucket, german profile | • | • | • | • |
| 7 Bucket, grading | • | • | • | • |
| 8 Bucket, grading german type | • | • | • | • |
| 9 Bucket, grading, UK style | • | • | • | • |
| 10 Bucket skeleton | • | • | • | • |
| 11 Bucket, tilt | • | • | • | • |
| 12 Coupler, mechanical | • | • | • | • |
| 13 Coupler, mechanical tilt | • | • | • | • |
| 14 Flail mower, self-levelling | • | – | • | • |
| 15 Hydraulic clamp | • | • | • | • |
| 16 Laser equipment | • | • | • | • |

• = available – = not available



BOBCAT OFFERS A WIDE RANGE OF ATTACHMENTS TO MEET YOUR NEEDS. CHECK OUT THE "BOBCAT ATTACHMENT CATALOG" FROM YOUR DEALER OR DOWNLOAD THE "ONE TOUGH WORLD" APP VIA THE QR CODE.

AUXILIARY CONTROL (A-SAC)

Selectable Auxiliary Control



VERSATILITY

Up to 5 independent hydraulic auxiliary circuits:

- AUX1 – general purpose
- AUX2 – supporting functions (rotation)
- AUX3 – clam shell bucket (bucket diverter)
- AUX4 – tilting coupler control
- AUX5 – hydraulic coupler control

Selectable Auxiliary Control (SAC) system allows for control pattern customization and optimal attachment fit (integral part of AUX4 option):

- Selectable boom or arm mounted auxiliaries
- Geith, Klac and Lehnhoff hydraulic coupler options
- Lehnhoff type couplers with optional tilting adapters



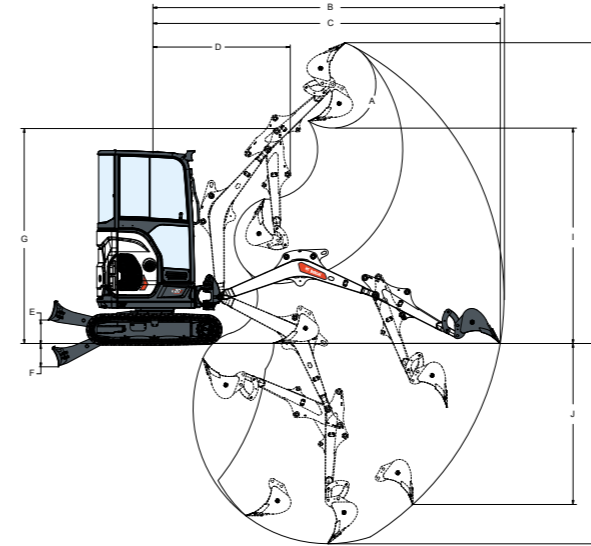
SPECIFICATIONS

| SPECIFICATIONS | | | | | |
|--|------------------|--------|--------|---|--------|
| | Unit | E16 | E17z | E19 | E20z |
| WEIGHTS | | | | | |
| Additional weight for cab with heating | kg | 99 | | – | |
| Additional weight for counter weight | kg | | – | 84 | – |
| Additional weight for long dipperstick | kg | | – | 3 | 4 |
| Additional weight for long dozer blade | kg | | 12 | | – |
| Ground pressure with rubber tracks | kPa | 27.7 | | 29.4 | 30.5 |
| Operating weight with cab and bucket (ISO 6016) | kg | | – | 1 905 | 1 980 |
| Operating weight with canopy and bucket (ISO 6016) | kg | 1 612 | 1 712 | | – |
| Transport mass (no attachment) | kg | 1 495 | 1 595 | 1 788 | 1 863 |
| Weight reduction with canopy | kg | | – | -99 | -83 |
| ENGINE | | | | | |
| Displacement | cm ³ | | | 854 | |
| Fuel | | | | diesel | |
| Make / model | | | | Yanmar / 3TNV70-SBC1 (Stage V) | |
| Maximum power @ 2 200 rpm (ISO 14396) | kW | | | 10.1 | |
| Maximum torque @ 1 600 rpm (SAE J1995) | Nm | | | 49.8 | |
| Number of cylinders | | | | 3 | |
| HYDRAULIC SYSTEM | | | | | |
| Auxiliary (AUX1) flow | l/min | | | 30 | |
| Auxiliary (AUX2) flow | l/min | | – | | 12 |
| Auxiliary (AUX1) relief | bar | | | 180 | |
| Auxiliary (AUX2) relief | bar | | – | | 179 |
| Pump type | | | | Single outlet variable displacement, load sensing torque pump | |
| Pump capacity @ 2 200 rpm | l/min | | | 44 | |
| PERFORMANCE | | | | | |
| Digging force, dipperstick (ISO 6015) | N | | 11 920 | | 12 630 |
| Digging force, long dipperstick (ISO 6015) | N | | – | | 11 510 |
| Digging force, bucket (ISO 6015) | N | | 14 550 | | 18 330 |
| Drawbar pull | N | 18 965 | 18 905 | 23 778 | 23 734 |
| Travel speed, high range | km/h | | | 4 | |
| Travel speed, low range | km/h | | | 2 | |
| SLEW SYSTEM | | | | | |
| Boom swing, left | ° | | | 80 | |
| Boom swing, right | ° | | | 60 | |
| Slew rate | rpm | | 9.3 | | 9.7 |
| FLUID CAPACITIES | | | | | |
| Fuel reservoir | l | | | 21.2 | |
| Hydraulic reservoir | l | | | 14.3 | |
| ENVIRONMENTAL | | | | | |
| Hand-arm vibration (ISO 5349–1) | ms ⁻² | 0.52 | 0.49 | | 0.52 |
| Noise level LpA (EU Directive 2006/42/EC) | dB(A) | | 80 | | 77 |
| Noise level LWA (EU Directive 2000/14/EC) | dB(A) | | | 93 | |
| Whole body vibration (ISO 2631–1) | ms ⁻² | 0.24 | 0.23 | | 0.24 |

Certain specification(s) are based on engineering calculations and are not actual measurements. Specification(s) are provided for comparison purposes only and are subject to change without notice. Specification(s) for your individual Bobcat equipment will vary based on normal variations in design, manufacturing, operating conditions, and other factors. Pictures of Bobcat units may show other than standard equipment.

DIMENSIONS & WORKING AREA

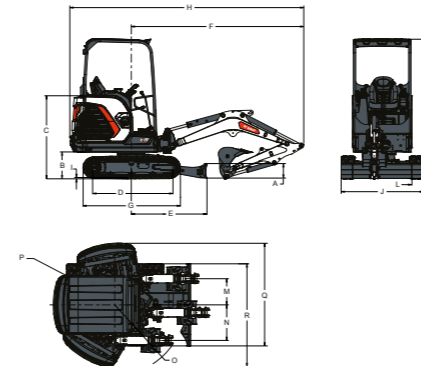
WORKING AREA



| WORKING AREA | | | | | |
|--------------|------|-------|-------|-------|-------|
| | Unit | E16 | E17z | E19 | E20z |
| A | ° | 209 | 196 | 197 | 196 |
| B | mm | 3 948 | 3 996 | 4 111 | 4 161 |
| B* | mm | | – | 4 283 | 4 334 |
| C | mm | 3 894 | 3 944 | 4 062 | 4 112 |
| C* | mm | | – | 4 237 | 4 287 |
| D | mm | 1 549 | 1 599 | 1 538 | 1 588 |
| D* | mm | | – | 1 558 | 1 608 |
| E | mm | 220 | | 300 | 298 |
| E* | mm | 300 | | | – |
| F | mm | 206 | 204 | 254 | 256 |
| F* | mm | | 254 | | – |
| G | mm | 2 428 | | | 2 589 |
| H | mm | 3 401 | 3 398 | 3 600 | 3 602 |
| H* | mm | | – | 3 701 | 3 730 |
| I | mm | | 2 390 | | 2 588 |
| I* | mm | | – | 2 716 | 2 715 |
| J | mm | | 1 764 | 1 829 | 1 898 |
| J* | mm | | – | 2 064 | 2 076 |
| K | mm | | 2 230 | | 2 364 |
| K* | mm | | – | | 2 544 |

Values marked with*— Long dipperstick

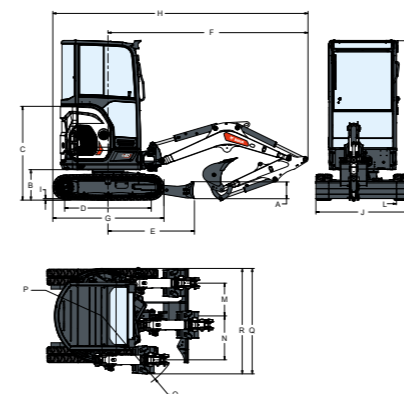
DIMENSIONS CANOPY



| DIMENSIONS | | | | | |
|------------|------|-------|-------|-------|-------|
| | Unit | E16 | E17z | E19 | E20z |
| A | mm | 240 | | 246 | |
| B | mm | 442 | 443 | 445 | 442 |
| C | mm | 1 364 | 1 149 | 1 368 | 1 150 |
| D | mm | | 1 114 | | 1 258 |
| E | mm | 1 046 | 1 045 | 1 252 | 1 254 |
| F | mm | 2 696 | 2 745 | 2 857 | 2 907 |
| G | mm | | 1 476 | | 1 651 |
| H | mm | 3 704 | 3 480 | 3 875 | 3 708 |
| I | mm | | | 22 | |
| J | mm | | | 980 | |
| J* | mm | | | 1 360 | |
| K | mm | 2 321 | 2 317 | 2 321 | 2 329 |
| L | mm | | | 230 | |
| M | mm | 433 | 476 | 433 | 476 |
| N | mm | 589 | 638 | 589 | 638 |
| O | mm | 1 156 | 1 190 | 1 163 | 1 199 |
| P | mm | 1 024 | 690 | 1 019 | 690 |
| Q | mm | 1 806 | 1 370 | 1 700 | 1 532 |
| R | mm | 1 652 | 1 370 | 1 702 | 1 396 |

Values marked with*— two 190 mm blade extensions

DIMENSIONS CAB



FINANCING OPTIONS

24, 36, OR 48-MONTH FINANCING*

Take advantage of 24, 36, or 48-month financing programs starting from **0% interest** and improve your cash flow.

Ask your dealer about the available financing offers.

340 MACHINES / **150** ATTACHMENT FAMILIES / **1** TOUGH ANIMAL



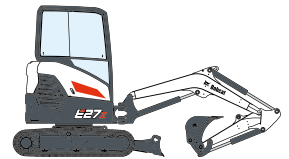
**SKID-STEER
LOADERS**



**COMPACT TRACK
LOADERS**



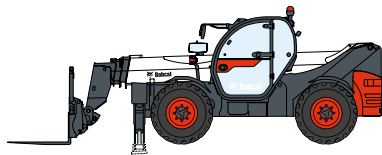
**SMALL ARTICULATED
LOADERS**



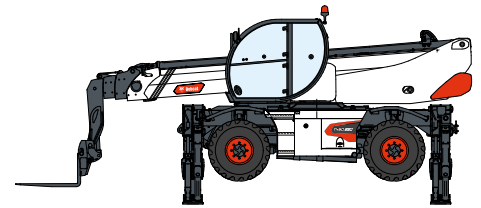
**COMPACT
EXCAVATORS**



FORKLIFTS



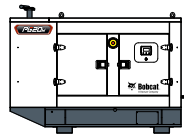
TELEHANDLERS



ROTARY TELEHANDLERS



**WAREHOUSE
EQUIPMENT**



GENERATORS



**AIR
COMPRESSORS**



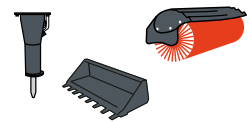
**LIGHT COMPACTION
EQUIPMENT**



**MINI TRACK
LOADER**



MOWERS



ATTACHMENTS

DOOSAN

Bobcat is a Doosan Company. Doosan is a global leader in construction equipment, power & water solutions, engines, and engineering proudly serving customers and communities for more than a century. | Bobcat and the Bobcat logo are registered trademarks of Bobcat Company in the United States and various other countries. ©2025 Bobcat Company. All Rights Reserved.

*Financing options may vary by country and dealer. Always ask your dealer about currently available financing options. Terms and conditions may apply.

Doosan Bobcat EMEA, U Kodelky 1810, 263 12 Dobříš, Czech Republic

www.bobcat.com

©2025 BOBCAT B4500152-EN (03-25)



Bobcat